

SCOTSMAN

UNDERCOUNTER COMPACT CUBER WITH STORAGE

50 Hz

SCE170



VOLUME PRODUCTION • 24 HOUR

Based on Air/Water Temperatures	Air-Cooled		Water-Cooled	
	70°/50° lbs./kg.	90°/70° lbs./kg.	70°/50° lbs./kg.	90°/70° lbs./kg.
SCE170-6	147/66	98/44	147/66	127/57

DEPENDABLE PERFORMANCE IN ANY CONDITION:

- 70 lbs. of storage.
- Removable cabinetry facilitates easy access for maintenance.
- Front access to air filter, control box, water pump and float.
- Removable, cleanable air filter.
- Cabinet constructed of durable rust-free rotocast plastic.
- 7 ft. powercord for quick installation.

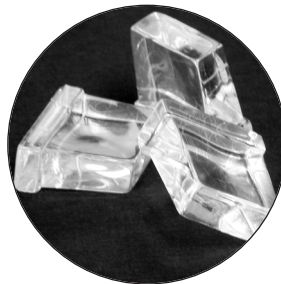
WARRANTY *See your dealer for complete warranty details.*

- Parts and labor on all components.



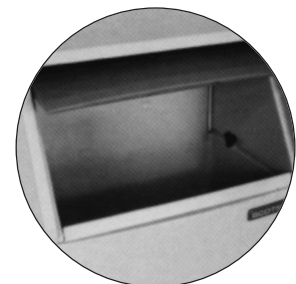
UNDERCOUNTER INSTALLATION

Adapts to numerous under-counter applications. Fits under any 40"/102 cm counter.



WAFFLE ICE

Approx. Size
7/8" X 1/2" X 1"
22mm x 12.7mm x 25.4mm



SLIDE AWAY ACCESS DOOR

Provides convenient and easy access to ice.



Scotsman is proud to announce that we are ISO-9001:2000 Certified

This product qualifies for the following listings:

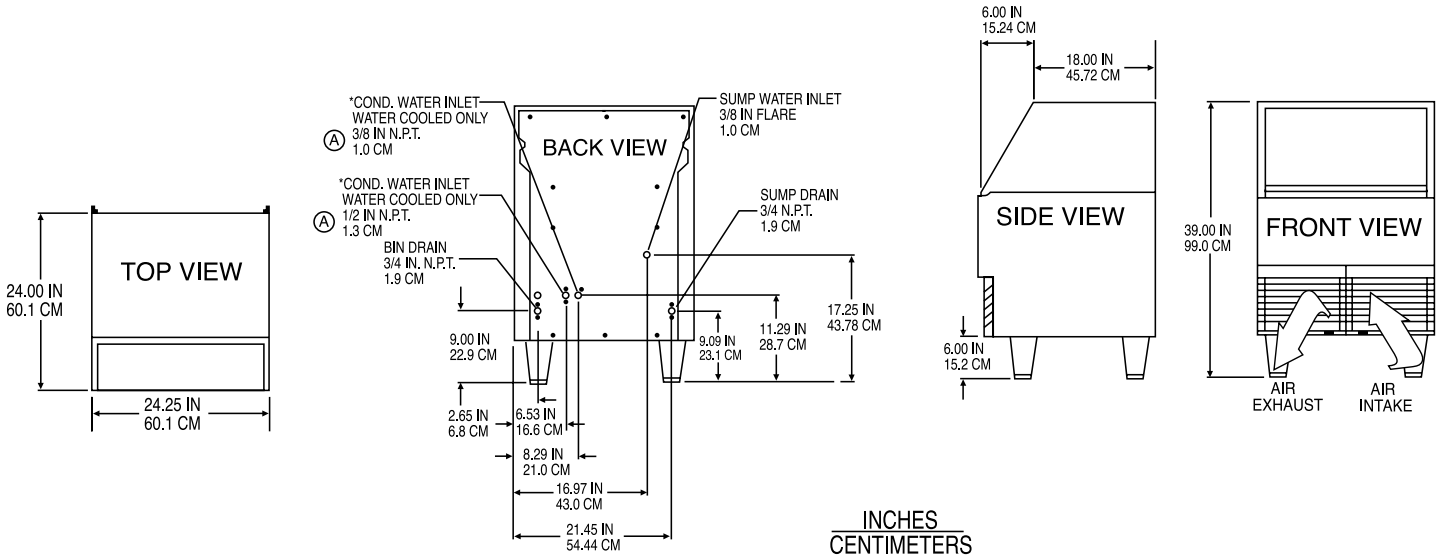


Rated in accordance with ARI standard 810-95 & 820-95

 **Scotsman**[®]

Ice Machine Specifications

50 Hz



INSTALLATION NOTE: Allow 6" minimum space at back for utility connections.

All models: Dimensions: W x D x H without legs (Add 6" height for legs): Unit: 24-1/4" x 24" x 33" Shipping Carton: 27-1/2" x 27" x 39"

Model Number	Condenser Unit	Bin Cap. lbs./kg.	Basic Electrical Volts/Hz/Phase	Max. Load Amps	Comp. HP	Circuit Wires	Min. Circuit Ampacity	Shipping Weight lbs./kg.
SCE170A-6B	AIR	70/32	230/50/1	15	1/4	2	CORD	185/84
SCE170W-6B	WATER	70/32	230/50/1	15	1/4	2	CORD	180/82

Finish: rotocast grey plastic.
 Refrigerant-R-404A

LEGS SUPPLIED:
 Four plastic legs screw into mounting plates on cabinet base. Provides 6" minimum height.

Scotsman's ice machines are not designed for outdoor installations. Scotsman remote condensers are designed for outdoor installations.

Machine requires voltage indicated on rating name plate. Failures caused by improper voltage are not considered factory defects. Extended periods of operation at temperatures exceeding limitations constitutes misuse under the terms of Scotsman Manufacturer's Limited Warranty, resulting in a loss of warranty coverage. Specifications and design are subject to change without notice.

Consult Your Local SCOTSMAN Representative At:

IMPORTANT OPERATING REQUIREMENTS:

	Minimum	Maximum
Air Temperatures	50°F (10°C)	100°F (37.7°C)
Water Temperatures	40°F (4.4°C)	100°F (37.7°C)
Water Pressures	20 PSIG	120 PSIG
Electrical Voltage	-5%	+10%

YOU'LL VALUE THE DIFFERENCE™

775 Corporate Woods Parkway • Vernon Hills, IL 60061 • 1-800-SCOTSMAN • Fax: (847) 913-9844
 Visit our website at: www.scotsman-ice.com • E-mail: customer.service@scotsman-ice.com

